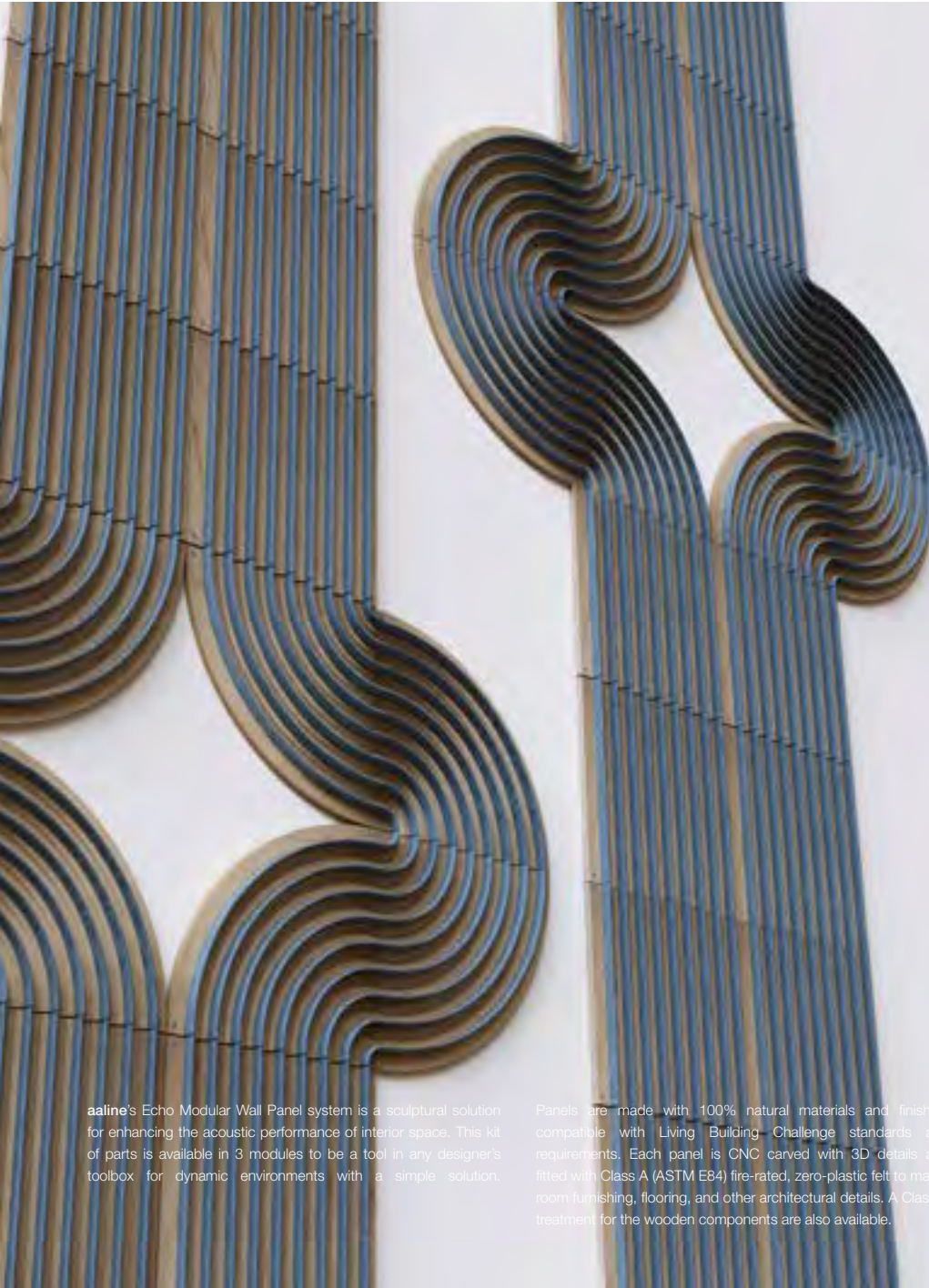



Echo Modular Wall Panel



SERIES	Echo
MODEL	Moduler Wall Panel
EDITION	Linear Crossover 90° Turn
NRC RATING	Standard: 0.4 High: Up to 1.0
WEIGHT	<3 lbs per foot <5 kg per metre
MOUNTING	Surface mountr screws with felt caps
MANUFACTURED IN	Toronto, ON, Canada
WARRANTY	10 year life cycle support 5 year warranty on parts Reclamation program available
CERTIFICATIONS	

aaline's Echo Modular Wall Panel system is a sculptural solution for enhancing the acoustic performance of interior space. This kit of parts is available in 3 modules to be a tool in any designer's toolbox for dynamic environments with a simple solution.

Panels are made with 100% natural materials and finishes, compatible with Living Building Challenge standards and requirements. Each panel is CNC carved with 3D details and fitted with Class A (ASTM E84) fire-rated, zero-plastic felt to match room furnishing, flooring, and other architectural details. A Class A treatment for the wooden components are also available.

[OPEN ONLINE PRODUCT CONFIGURATOR](#)



PROJECT

LIGHT TYPE

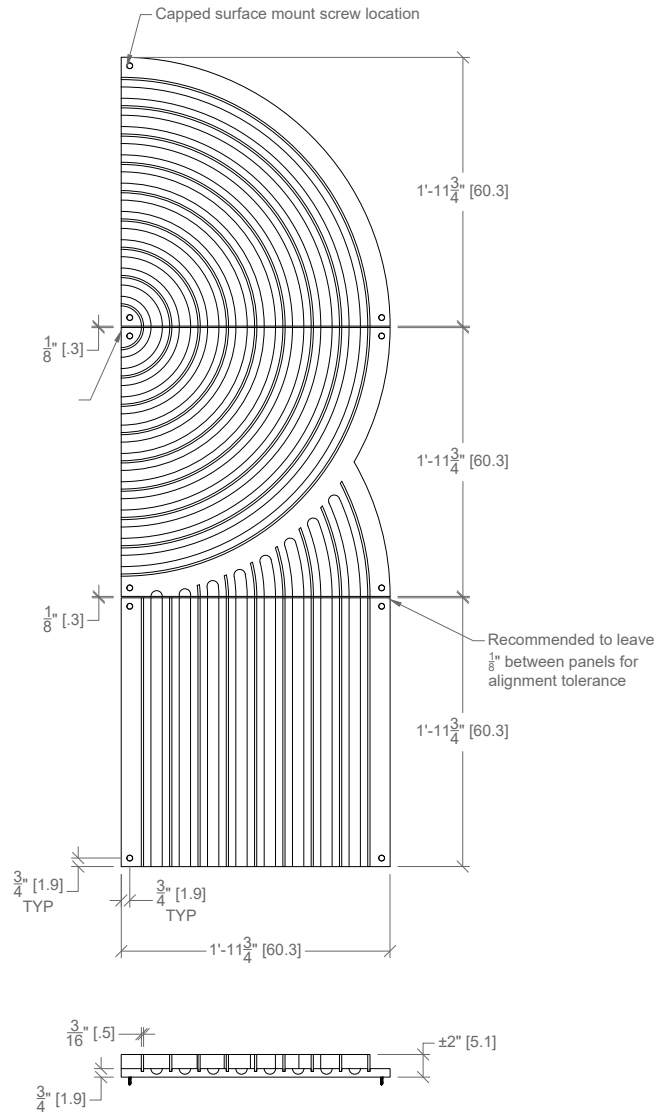
QUANTITY

Product design at **aaline** is continuously refined to uphold the highest quality standards. We reserve the right to change specifications, contact us for the latest information. Final specifications and material selections will be confirmed at the shop drawing stage.

Echo Modular Wall Panel

03. EDITION

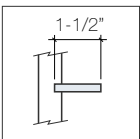
06/07. WOOD BODY/FINISH: CLEAR



★ Clear finish on EGW will have live edge visible

	CONTACT US FOR SAMPLE	CONTACT US FOR SAMPLE
EGW-CFST + Clear Finish Satin 10 GU @ 60°	EGW-CFDO + Danish Oil <5 GU @ 60°	EGW-CFEC ECO Coat Zero VOC <7 GU @ 60°
WAL-CFST + Clear Finish Satin 10 GU @ 60°	WAL-CFDO ++ Danish Oil <5 GU @ 60°	WAL-CFEC + ECO Coat Zero VOC <7 @ 60°
OAK-CFST + Clear Finish Satin 10 GU @ 60°	OAK-CFDO ++ Danish Oil <5 GU @ 60°	OAK-CFEC + ECO Coat Zero VOC <7 @ 60°
CHR-CFST + Clear Finish Satin 10 GU @ 60°	CHR-CFDO ++ Danish Oil <5 GU @ 60°	CHR-CFEC + ECO Coat Zero VOC <7 @ 60°
MPL-CFST + Clear Finish Satin 10 GU @ 60°	MPL-CFDO ++ Danish Oil <5 GU @ 60°	MPL-CFEC + ECO Coat Zero VOC <7 GU @ 60°
ASH-CFST + Clear Finish Satin 10 GU @ 60°	ASH-CFDO ++ Danish Oil <5 GU @ 60°	ASH-CFEC + ECO Coat Zero VOC <7 GU @ 60°

04. DEPTH



D01 •
1-1/2"

Echo Modular Wall Panel

07. WOOD BODY FINISH: PAINTED

08. ACOUSTIC FELT



[Click here for the entire felt collection](#)



Painted finish for EGW wood types only



EGW-PFBK
Satin Black
20-35 GU @ 60°



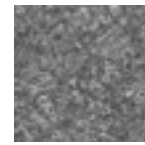
EGW-PFWH
Satin White
20-35 GU @ 60°



EGW-PFXX +
Custom Paint
20-35 GU @ 60°



F384
Charcoal



F382
Pebble Grey



F311
Wool White



F251
Meadow Green



F152
Olive



FXXX +
Custom

AALINE RECLAMATION PROGRAM



[Click here for more on Product Life Cycle](#)



Right to Repair

aaline is committed to providing services and support at all stages of the design process, including reclamation and disposal. Please contact us and we will arrange to get the system to our factory so we can refurbish it for you or re-use parts and components that can be reclaimed. Our lighting and acoustic fixtures are made with 100% biodegradable or recyclable materials. The electrical components are RoHS certified and contain no hazardous elements and should be recycled at a specialized recycling facility.

Echo Modular Wall Panel

PRODUCT SPECIFICATION

• PRODUCT STANDARD | + PRODUCT UPGRADE

EC - MW - LN^{QTY} - CO^{QTY} - 90^{QTY} - D01 - - - -

01 02 03 05 06 07 08

PARAMETER	CODE	DESCRIPTION	CONDITIONALS	NOTES
01. SERIES	EC	Echo		
02. MODEL	MW	Modular Wall Panel		
03. EDITION	LN CO 90	Linear Crossover 90° Turn		
04. DEPTH	D01	1-1/2"		
05. NRC RATING	NST NHI	Standard: 0.4 High: Up to 1.0		Class A fire-rated acoustic felt Additional panelized fibres behind wood
06. WOOD BODY	EGW	Engineered Wood		
SPECIAL ORDER	WAL + OAK + CHR + MPL + ASH +	Walnut White Oak Cherry Maple Ash		
07. WOOD BODY FINISH: CLEAR	CFST CFDO + CFEC CFFR +	Clear Finish Satin Danish Oil ECO Coat Zero VOC Fire-Rated Clear Coat Class A		Conforms to ASTM E84 Canadian Standard CAN/ULC S-102-10
WOOD BODY FINISH: PAINTED	PFBK PFWH PFX +	Painted Finish Satin Black Painted Finish Satin White Painted Finish Custom	For EGW and ASH wood types only	
08. ACOUSTIC FELT	F384 F382 F311 F251 F152 F000	Charcoal Pebble Grey Wool White Meadow Green Olive Custom		

CUSTOM NOTES