

# Echo Pendant

## COB LED EDITION GLOBE TYPE



<b>SERIES</b>	Echo
<b>MODEL</b>	Pendant
<b>EDITION</b>	COB LED
<b>TYPE</b>	Globe   Frosted Opal Glass
<b>LUMEN OUTPUT + CONSUMPTION</b>	LO: 353 lm   5.4 W   65.4 lm/W ST: 470 lm   7.2 W   65.3 lm/W HI: 646 lm   9.9 W   65.3 lm/W
<b>OPTICS</b>	Omni-Directional   340°
<b>POWER INPUT</b>	110-277V AC   50/60 Hz
<b>WEIGHT</b>	<3 lbs per foot   <5 kg per metre
<b>SUSPENSION</b>	Adjustable up to specified length Standard: 5 ft   152 cm
<b>MANUFACTURED IN</b>	Toronto, ON, Canada
<b>WARRANTY</b>	10 year life cycle support 5 year warranty on parts Reclamation program available

**CERTIFICATIONS**

The "Hero Piece" of the collection, the Echo Pendant is designed for versatile use in a wide range of interior spaces. Available in different sizes and colours, this fixture is suitable for residential, hospitality, or commercial applications. Dual-layer, zero-plastic acoustic felt, nested in CNC carved 3D grooves in a solid wood base allows an

additional layer of personalization to the fixture and creates a gradient illusion from all angles, a reference to "Harmonic Serialism", the concept behind the collection. Now available as a COB LED version, The Echo Pendant offers various dimming control, lumen outputs, optics, and colour temperatures to further customize your fixture.

[OPEN ONLINE PRODUCT CONFIGURATOR](#)



PROJECT

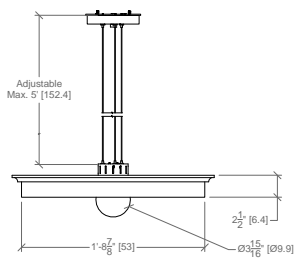
LIGHT TYPE

QUANTITY

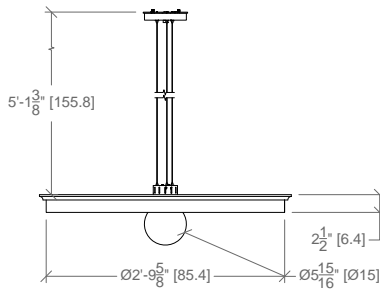
Product design at **aaline** is continuously refined to uphold the highest quality standards. We reserve the right to change specifications, contact us for the latest information. Final specifications and material selections will be confirmed at the shop drawing stage.

# Echo Pendant

## 05. SIZE

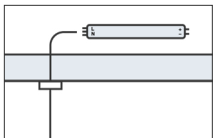


**M**  
1'-11" Ø  
4" Frosted Globe

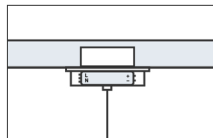


**L**  
2'-11 1/2" Ø  
6" Frosted Globe

## 06. DRIVER



**R**  
**Remote**  
Driver is in a remote location



**C**  
**Powered Canopy**  
Driver is in a canopy connected to the junction box

## 09. OPTICS



**OM**  
**Omni-Directional**  
340°  
Distribution limited to ~180° based on fixture design

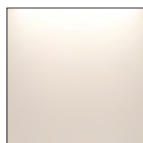
## 10. COLOUR TEMP



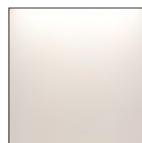
**27**  
**2700K**  
Warm White  
90+ CRI



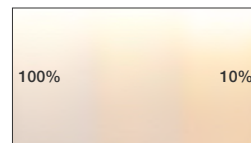
**30**  
**3000K**  
Soft White  
90+ CRI



**35**  
**3500K**  
Natural White  
90+ CRI



**40**  
**4000K**  
Cool White  
90+ CRI



**DW +**  
**3000K - 1800K**  
Dim-To-Warm

# Echo Pendant

## 11/12. WOOD BODY/FINISH: CLEAR

★ Clear finish on EGW will have live edge visible



**WAL-CFST**  
Clear Finish Satin  
10 GU @ 60°



**WAL-CFDO +**  
Danish Oil  
<5 GU @ 60°



**WAL-CFEC**  
ECO Coat | Zero VOC  
<7 @ 60°



**OAK-CFST**  
Clear Finish Satin  
10 GU @ 60°



**OAK-CFDO +**  
Danish Oil  
<5 GU @ 60°



**OAK-CFEC**  
ECO Coat | Zero VOC  
<7 @ 60°



**CHR-CFST**  
Clear Finish Satin  
10 GU @ 60°



**CHR-CFDO +**  
Danish Oil  
<5 GU @ 60°



**CHR-CFEC**  
ECO Coat | Zero VOC  
<7 @ 60°



**MPL-CFST**  
Clear Finish Satin  
10 GU @ 60°



**MPL-CFDO +**  
Danish Oil  
<5 GU @ 60°



**MPL-CFEC**  
ECO Coat | Zero VOC  
<7 GU @ 60°



**ASH-CFST**  
Clear Finish Satin  
10 GU @ 60°



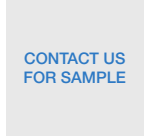
**ASH-CFDO +**  
Danish Oil  
<5 GU @ 60°



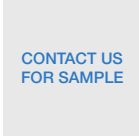
**ASH-CFEC**  
ECO Coat | Zero VOC  
<7 GU @ 60°



**EGW-CFST**  
Clear Finish Satin  
10 GU @ 60°



**EGW-CFDO +**  
Danish Oil  
<5 GU @ 60°



**EGW-CFEC**  
ECO Coat | Zero VOC  
<7 GU @ 60°

## 12. WOOD BODY FINISH: PAINTED

★ Painted finish for EGW wood types only



**EGW-PFBK**  
Satin Black  
20-35 GU @ 60°



**EGW-PFWH**  
Satin White  
20-35 GU @ 60°



**EGW-PFXX +**  
Custom Paint  
20-35 GU @ 60°

## 13. FELT LAYERS



**SN •**  
Single  
5mm felt

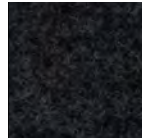


**DB +**  
Double  
3mm felt x2

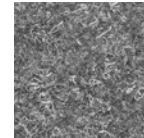
## 14/15. FELT EXTERIOR/INTERIOR



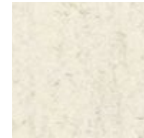
Click here for the entire felt collection



**F384**  
Charcoal



**F382**  
Pebble Grey



**F311**  
Wool White



**F251**  
Meadow Green



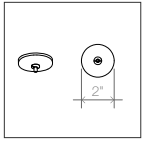
**F152**  
Olive



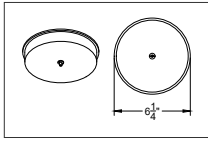
**FXXX +**  
Custom

# Echo Pendant

## 16. CANOPY DIMENSIONS



**Remote Canopy**  
Driver is in a remote location



**Powered Canopy**  
Driver is in a canopy connected to the junction box

## 17. CABLE COLOUR



**C**  
**Clear Jack with Silver Core**  
Remote Systems  
Low-voltage

## 19. MOUNTING



**PO**  
**Power Over Cable**  
Low voltage power over cable hardware



**JB**  
**Junction Box**  
Hanging cable at the centre of the junction box

## AALINE RECLAMATION PROGRAM



Click here for more on Product Life Cycle



### Right to Repair

aaline is committed to providing services and support at all stages of the design process, including reclamation and disposal. Please contact us and we will arrange to get the system to our factory so we can refurbish it for you or re-use parts and components that can be reclaimed. Our lighting and acoustic fixtures are made with 100% biodegradable or recyclable materials. The electrical components are RoHS certified and contain no hazardous elements and should be recycled at a specialized recycling facility.

# Echo Pendant

COB LED EDITION | GLOBE TYPE | PRODUCT SPECIFICATION

• PRODUCT STANDARD | + PRODUCT UPGRADE

EC - PN - COB - GL - - - - - OM - - - - - C -  
01 02 03 04 05 06 07 08 09 10 11 12 13 14 15 16 17/18 19

PARAMETER	CODE	DESCRIPTION	CONDITIONALS	NOTES
01. SERIES	EC	Echo		
02. MODEL	PN	Pendant		
03. EDITION	COB	COB LED		
04. TYPE	GL	Globe   Frosted Opal Glass		
05. SIZE	M L	1'-10" Ø   4" Frosted Globe 2'-11 1/2" Ø   6" Frosted Globe		
06. DRIVER	R C	Remote Canopy		
07. DIMMING	010 • 020 DAL + LUT +	0-10V TRIAC/ELV DALI LUTRON Athena Wireless Node	For R driver only For R driver only	Reduced warranty, contact us for more info
08. LUMEN OUTPUT	LO ST • HI +	353 lm   5.4 W   65.4 lm/W 470 lm   7.2 W   65.3 lm/W 646 lm   9.9 W   65.3 lm/W		LED source output. Based on 3500K with XW beam angle. Actual output may vary +/- 5%
09. OPTICS	OM	Omni Directional   340°		Distribution limited to ~180° based on fixture design
10. COLOUR TEMP	27K 30K 35K 40K DW +	2700K   Warm White   90+ CRI 3000K   Soft White   90+ CRI 3500K   Natural White   90+ CRI 4000K   Cool White   90+ CRI Dim-To-Warm   3000K - 1800K		
11. WOOD BODY	EGW WAL + OAK + CHR + MPL + ASH +	Engineered Wood Walnut White Oak Cherry Maple Ash		
12. WOOD BODY FINISH: CLEAR	CFST CFDO + CFEC	Clear Finish Satin Danish Oil ECO Coat   Zero VOC		
WOOD BODY FINISH: PAINTED	PFBK PFWH PFXX +	Painted Finish Satin Black Painted Finish Satin White Painted Finish Custom	For EGW and ASH wood types only	
13. FELT LAYERS	SN • DB +	Single Layer   5mm Felt Double Layer   3mm Felt x 2		
14. FELT OUTSIDE <i>EXTERIOR FELT OR SINGLE LAYER</i>	F0384 F0382 F0311 F0251 F0152 F0000	Charcoal Pebble Grey Wool White Meadow Green Olive Custom		

# Echo Pendant

COB LED EDITION | GLOBE TYPE | PRODUCT SPECIFICATION

• PRODUCT STANDARD | + PRODUCT UPGRADE

EC - PN - COB - GL - - - - - OM - - - - - C -  
01 02 03 04 05 06 07 08 09 10 11 12 13 14 15 16 17/18 19

PARAMETER	CODE	DESCRIPTION	CONDITIONALS	NOTES
15. FELT INSIDE <i>INTERIOR FELT</i>	F1384	Charcoal	Felt Inside available on DB Felt Layers only	
	F1382	Pebble Grey		
	F1311	Wool White		
	F1251	Meadow Green		
	F1152	Olive		
	F1000	Custom		
16. CANOPY COLOUR	WH •	White		
	BK	Black		
	XX +	Custom		
17. CABLE COLOUR	C	Clear Jacket with Silver Core		
18. CABLE LENGTH		In Feet 5' standard •   6' and above +		On-site adjustable
19. MOUNTING <i>ADD-ON</i>	PO	Power Over Cable	For R driver only	
	JB	Junction Box Support	For C driver only	

## CUSTOM NOTES